

MOD-TAP

High Density Modular Fiber Optic TAP

A Perfect Blend of Performance and Flexibility

- The MOD-TAP is the result of years of experience with high-end fiber optic technology as well as sturdy chassis construction design. The MOD-TAP is a high-density, modular fiber optic solution providing up to 24 LC TAP modules or 16 MTP or 40G BiDi TAP modules in 1U.

LC Fiber Optic Modules use LC connectors with low insertion loss zirconia sleeve adapters, and are available in Single-Mode (1310/1550nm 9/125µm) and Multi-Mode (850/1300nm 50µm and 62.5µm), with split ratios ranging from 50/50 to 70/30.

MTP Fiber Optic Modules use low insertion loss US Conec MTP Elite® connectors and OM4 Multi-Mode fiber optic cabling providing a 50/50 split ratio.

40G BiDi Modules use OM4 Multi-Mode (850/1310nm 50µm) fiber optic cabling with a 50/50 split ratio for the monitoring of Cisco 40G bidirectional links.

- Features**
 - Non-intrusive in-line monitoring
 - Permanent network link guaranteed
 - Monitoring of all OSI layers
 - No packet loss
 - No point of failure
 - Passive, unpowered
 - Various split ratios available
 - 10-year warranty

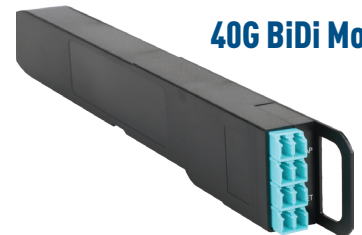
LC Modules



MTP Module



40G BiDi Module



Modular Chassis



Maximum Insertion Loss (dB)

Split ratio	50/50	60/40	70/30	80/20
Multi-Mode 50/62.5µm	4.0/4.0	3.0/5.0	2.4/6.3	1.8/8.1
Single-Mode 9µm	3.6/3.6	2.7/4.7	1.9/6.0	1.2/7.9
Multi-Mode SR4/SR10	4.2/4.2			
40G BiDi (MM 50µm)	3.8/3.8			

Chassis	Order reference
For up to 24 LC or 16 MTP or 40G BiDi modules	AMC-1U

Type	Fiber	Speed	Order reference
LC	MM 62.5/125 µm	1 Gbps	F1L-MOD-U-**
	MM 50/125 µm	1-10 Gbps	F1L-MOD-Z-**
	SM 9/125 µm	1-100 Gbps	F1L-MOD-S-**
MTP/MPO	MM 40GBASE-SR4	40 Gbps	F1M-MOD-SR4-50
	MM 100GBASE-SR10	100 Gbps	F1M-MOD-SR10-50
40G BiDi	MM 50/125 µm	40 Gbps	F1B-MOD

Technical Specifications

	Dimensions (WxDxH)	Weight
Modular Chassis		
AMC-1U	440 x 202 x 44 mm	2140 g
	17.3 x 8 x 1.7 in	4.7 lb
LC Module		
F1L-MOD	17 x 217 x 41 mm	76 g
	0.7 x 8.5 x 1.6 in	0.17 lb
MTP Module		
F1M-MOD	25 x 217 x 41 mm	90 g
	1 x 8.5 x 1.6 in	0.2 lb
40G BiDi Module		
F1B-MOD	25 x 217 x 41 mm	90 g
	1 x 8.5 x 1.6 in	0.2 lb

** Split Ratio: 50 = 50/50 • 60 = 60/40 • 70 = 70/30
For other split ratios, please contact us for availability.

Profitap HQ B.V.

High Tech Campus 9
5656 AE Eindhoven
The Netherlands

+31 (0) 40 782 0880

www.profitap.com